



Toll free +1 (833) 978 8833  
info@mckequipment.ca  
Visit [mckonline.ca](https://mckonline.ca) for more details

Quality Kitchen  
Equipment & Supplies



# Black Ext. Glass Door Refrigerator Merchandisers

MCK-G258BMF-HC | MCK-G398BMF-HC |  
MCK-G648BMF-HC

## FEATURES

- Black steel exterior with stainless steel interior
- LED interior lighting standard
- Electronic Temperature controller
- Adjustable shelves
- Maintains temperatures between 33°F – 41°F
- Self-closing door(s) with automatic stay open feature
- Door lock(s) standard and magnetic door gasket
- Self-contained bottom mount
- Environmentally R290 refrigerant

MCK-G258BMF-HC



MCK-G398BMF-HC



MCK-G648BMF-HC

*Don't forget to leave the unit some room to breathe!*  
*Please clean the condenser frequently*  
*to give the unit more fresh air.*





Toll free +1 (833) 978 8833  
info@mckequipment.ca  
Visit [mckonline.ca](https://mckonline.ca) for more details

Quality Kitchen  
Equipment & Supplies

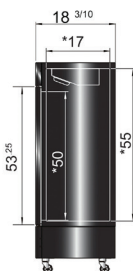
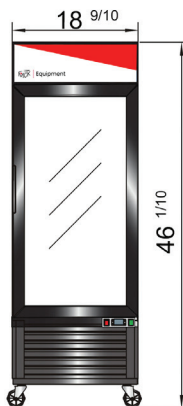


## SPECIFICATIONS

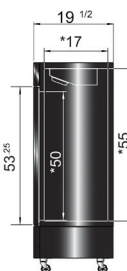
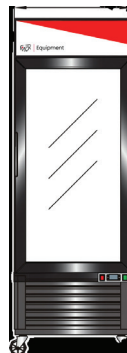
Model	Door	Capacity (Cu. Ft.)	Shelves	Casters (Inch)	Rated Current (A)	Voltage (V/Hz/Ph)	HP	Refrigerant	Exterior Dimensions	Net Weight (lbs)	Gross Weight (lbs)
MCK-G258BMF-HC	1	19.4	4	2	2.88	115/60/1	1/3	R290	18.9 x 18.3 x 46.1	86	102
MCK-G398BMF-HC	1	43.8	4	2	2.88	115/60/1	1/3	R290	22.8 x 19.5 x 55.5	120	135
MCK-G648BMF-HC	1	69.5	4	2	3	115/60/1	4/9	R290	25.2 x 28.3 x 62.5	145	160

## PLAN VIEW

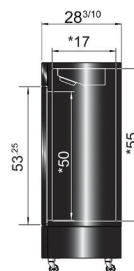
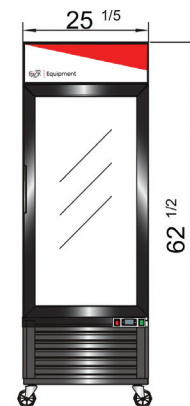
MCK-G258BMF-HC



MCK-G398BMF-HC

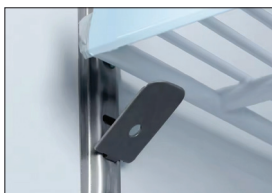


MCK-G648BMF-HC

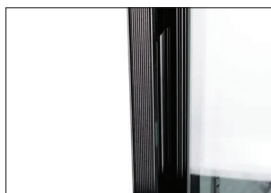


\* Interior Dimensions

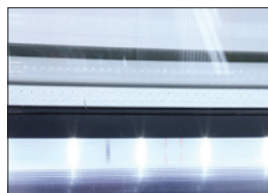
Adjustable Shelf



Door Handle



LED light



Door lock



Casters





Toll free +1 (833) 978 8833  
info@mckequipment.ca  
Visit [mckonline.ca](https://mckonline.ca) for more details

Quality Kitchen  
Equipment & Supplies



# Black Ext. Glass Door Refrigerator Merchandisers

MCK-GD-SC690F | MCK-GD-SC1390F |  
MCK-GD-SC2090F

## FEATURES

- Black steel exterior with stainless steel interior
- Lighted header panel
- LED interior lighting standard
- Maintains temperatures between 32°F – 44°F
- Electronic Temperature controller
- Four(4) adjustable shelves standard per section
- Double pane glass door(s)
- Self-closing door(s) with automatic stay open
- Automatic defrosting every 6 hr
- Recessed door handle
- Magnetic door gasket
- Pre-installed casters
- Pre-installed shelves
- NEMA-5-15P plug standard



MCK-GD-SC690F



MCK-GD-SC1390F



MCK-GD-SC2090F

**Don't forget to leave the unit some room to breathe!**  
Please clean the condenser frequently  
to give the unit more fresh air.





Toll free +1 (833) 978 8833  
info@mckequipment.ca  
Visit [mckonline.ca](http://mckonline.ca) for more details

Quality Kitchen  
Equipment & Supplies

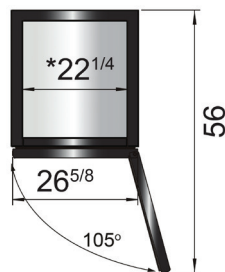


## SPECIFICATIONS

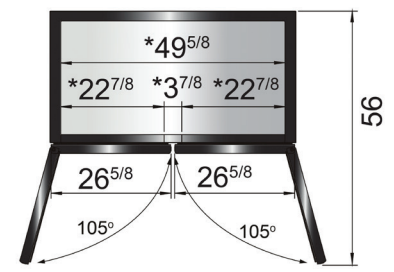
Model	Door	Capacity (Cu. Ft.)	Shelves	Casters (Inch)	Rated Current (A)	Voltage (V/Hz/Ph)	HP	Refrigerant	Exterior Dimensions (W x D x H inch)	Net Weight (lbs)	Gross Weight (lbs)
MCK-GD-SC690F	1	19.2	4	2	3.5	115/60/1	1/6	R290	27 × 33 1/2 × 83	242	286
MCK-GD-SC1390F	2	44.7	8	2	4.6	115/60/1	1/5	R290	54 2/5 × 33 1/2 × 83	385	462
MCK-GD-SC2090F	3	70	12	2	9	115/60/1	3/8	R290	81 × 33 1/2 × 83	595	701

## PLAN VIEW

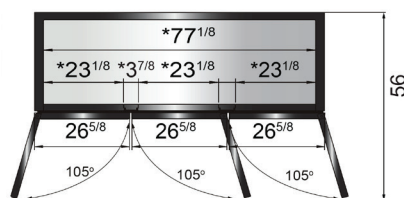
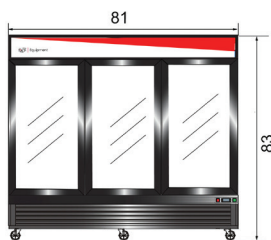
MCK-GD-SC690F



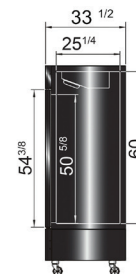
MCK-GD-SC1390F



MCK-GD-SC2090F



Side Dimension



\* Interior Dimensions

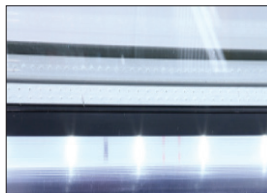
Door Handle



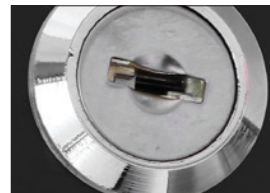
Temp. Control



LED light



Door lock



Casters

